

# Digital overprinting on packaging materials

When considering bespoke packaging, you may have been discouraged by large minimum order quantities, big set up charges and printing plate costs. With the advances in digital technology these obstacles have been removed.

Digital printing gives great results, whether it is text, multicoloured pictures or logos. This design is printed from a file so the date can be varied, allowing for different text on every item we print, making it ideal for personalisation or for different product variants.

- No origination or stereo charges
- Very low minimum order quantity
- Full colour print
- Short lead times
- Ideal for new product launches, marketing promotions and seasonal gifts
- Choose from our vast range of stock products



Postal Boxes



Paper Mailing Bags



Paper Carrier Bags



Stock Boxes



Bottle Packaging



Bookwraps and Folders



Bubble Envelopes



Padded Bags



Corrugated Envelopes



# Customise your packaging in 4 easy steps.....

1. Choose one of our stock products

Choose from:

- Paper Mailing Bags
- White Postal Boxes
- Brown Postal Boxes
- Padded Bags
- Paper Carrier Bags
- Bubble Envelopes
- Corrugated Envelopes
- Single Wall Boxes
- Double Wall Boxes
- Fast Assembly Boxes
- Long Boxes
- Bottle Packaging

Visit our website  
[www.kilby.co.uk/printme](http://www.kilby.co.uk/printme)  
for further details,  
or follow the help  
guide overleaf.

2. Send us the product code, quantity and what you would like printed.

3. We will send you a quotation. If you would like to proceed you will be sent a proforma invoice for payment and a template to show the print area of your chosen item once payment has been received.

4. Place your design on the template supplied and return as an Adobe Illustrator file or editable PDF. Images should ideally be 300 dpi, the higher the dpi the better print quality will be achieved.

Restrictions: Contact us for our print restrictions.

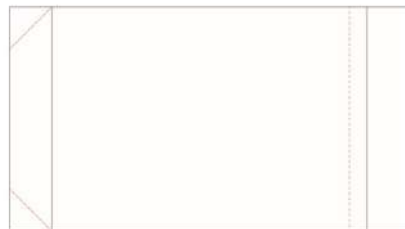
Digital overprinting utilises Kilby stock products, therefore company branding may be visible.

## Examples of one sided print areas

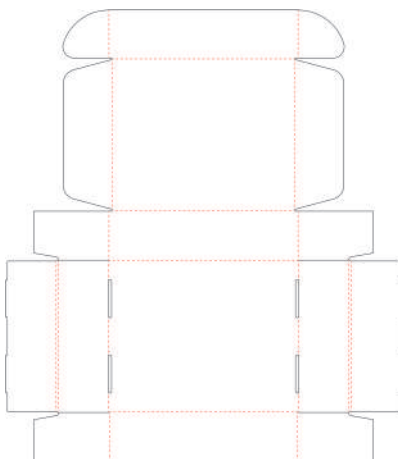
Corrugated envelope



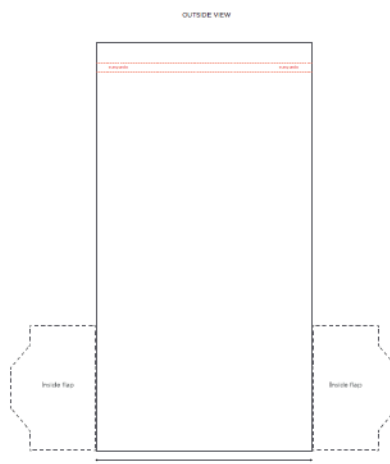
Paper Mailing Bag



Postal Box



Cardboard Folder



Can't see the size you need? Talk to us about a bespoke size.

